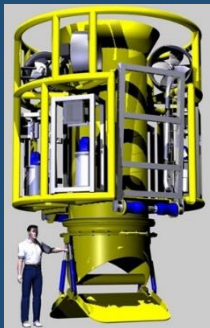




Small Subsea DC & AC Electric / Hydraulic Power Packs

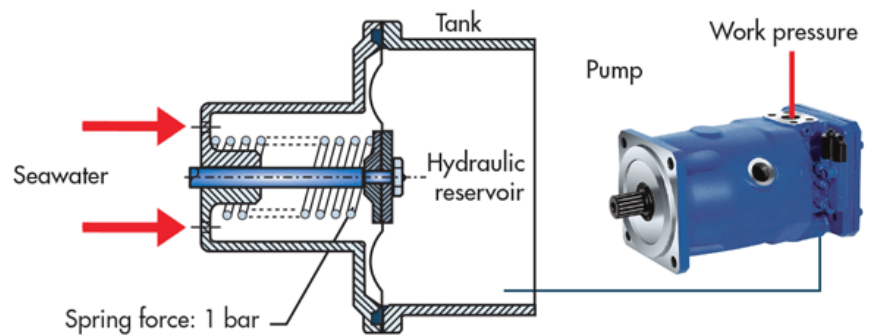
Key Features:

- High reliability, Rugged Design
- Adjustable Pressure Relief Valve
- Full Pressure Compensation to full ocean depth
- Low Cost Replacement Pumps
- Various Models from 1.5 upto 15 Kw
- Aluminum (hard anodized) stanard with 316 stainless steel options.
- Seal between E-Motor and Pump
- Voltages from 400 / 440 Vac
- Variable Speed/ Flow Control
- +/- 10V and RS485 Functions



Marine Propulsion Solutions – introduces a full series of **Subsea** Permanent Magnet Synchronous Electric / Hydraulic Integrated Power Packs. These robust pressure compensated HPU's reflect demanding needs on submerged intervention spreads and hydraulic sub-systems. A wide range of variable displacement pumps and regulator options allow tight adaption to application specific requirements.

Units are fully self-contained circuit incorporating hydraulic pump. Pressure compensated reservoir, suction filter, pressure relief valve and electric motor drives with inlet/outlet connection points



***Silent.... Dynamically Balanced.... and free of Vibration...
Full RPM / Variable Flow Control***

The model range spans over 6 classes of HPU's which range from 18 up to 400 Kw shaft output power. All motors are either 2-pole or 4-pole, 3 phase AC operating at 50/60 Hz. with voltages ranging from 400 Vac to 4.1 kV.



Electric / Hydraulic Power Packs

Marine Propulsion Solutions Subsea Group

Singapore / Batam Offices

www.marinepropulsionsolutions.com

Phone : +62 7784168866

Mobile: +62 811 7788802

Email:

Info@marinepropulsionsolutions.com



Marine Propulsion Solutions – Subsea Group

HPT Series Hydraulic Thrusters and Accessories

Small DC Hydraulic Power Units (HPU's) at adjustable pressures up to 200 bar / 3000 psi and is suitable for powering manipulators, tools etc. An integral, extremely adjustable pressure relief valve is used to set system pressure and a suction filter is fitted within the integral pressure compensated reservoir (rated up to 2,500M Ocean Depth).

Hydraulic Power Packs									
Brushless Permanent Magnet DC Motor (Small HPU's)									
Model	Voltage	Power		Flow Rates		Max Pressure		Reservoir Capacity	
	DC	Kw	Hp	L/M	GPM	BAR	PSI	LITRES	GALLONS
HPU1.5DC	96-120	1.5	2.0	4.4	1.15	207	3000	12	3
HPU2.5DC	96-120	2.5	3.4	7.4	1.95			19	5
HPU3.5DC	120-240	3.5	4.7	10.3	2.70			26	7
HPU5.0DC	120-240	5.0	6.7	14.8	3.90			45	10

Other Voltage & Power Options available on request

Reservoir with built-in Pressure Compensator and rated upto 3,000m Ocean Depth of Operation (other on request).

Hydraulic Power Packs									
Induction AC Motor (Small HPU's)									
Model	Voltage	Power		Flow Rates		Max Pressure		Reservoir Capacity	
	AC	Kw	Hp	L/M	GPM	BAR	PSI	LITRES	GALLONS
HPU1.5AC	400/440 Vac	1.5	2.0	5	1.15	207	3000	12	3
HPU3.0AC		3.0	4.0	9	2.3			27	7
HPU5.0AC		5.0	6.7	15	3.9			42	11
HPU7.5QC		7.5	10.0	22	5.8			60	16
HPU10AC		10.0	13.4	31	7.0	225	3260	75	20
HPU15AC		15.0	20.0	36	9.5	250	3625	120	27

Reservoir with built-in Pressure Compensator and rated upto 2,500m Ocean Depth of Operation (o

The units operate oil filled and compensated to ambient pressure. The housing is made from machined and anodized aluminum 6082T6. Fasteners, fittings and connectors are made from AISI316 stainless steel.

Integrated Hydraulic Systems

- Hydraulic Pumps / Pressure Compensated Electric Motor Drives
- Hydraulic Servo Valves
- Pressure Compensated Oil Reservoirs
- Pressure Compensators

Other options are available by contacting MPS engineering or sales department.

The inertia of rotating parts is low.... **parts are symmetrical, providing dynamic balance and free of vibration.**

